



Manual - RTR Momentum Trend All Symbols - Expert Advisor Setup

Manual v1.0

This manual will get you set up in 15 minutes, Expert Advisors for live trading or back testing In the MT5 Strategy Tester.

Retail Trading Realities Ltd
5/30/2025



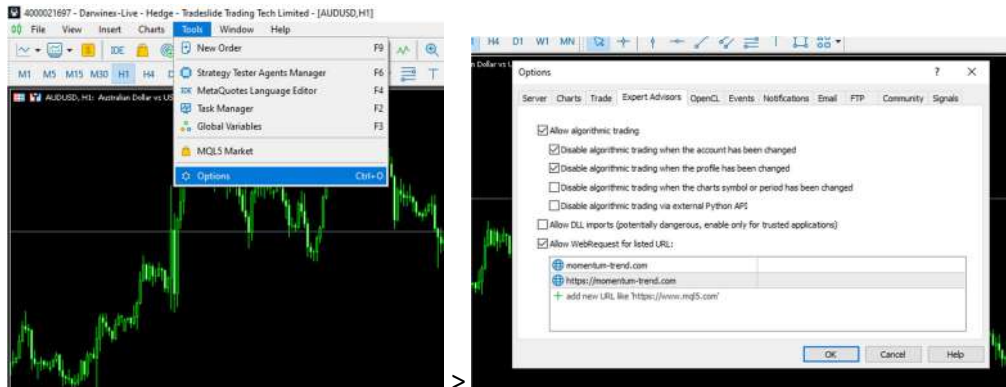


page	Content
2	Enable Web Requests in MetaTrader 5.
2	Expert Advisor Directory.
3	Load EA on Chart.
4	SET File Load/Save.
6	Change Risk Settings.
7	Add Symbols in Market Watch.
8	VPS (Virtual Private Server) / MT5 VPS Optimization.
11(Extra)	How to use MT5 Strategy Tester, for back testing, load Set files etc...
15	EA Inputs: Description & Explanation
17	Single symbol settings for RTR Momentum Trend All Symbols Unlimited
20	ERROR 4805 – Fix – Solution! Custom indicator Error [4805]
21	Contact

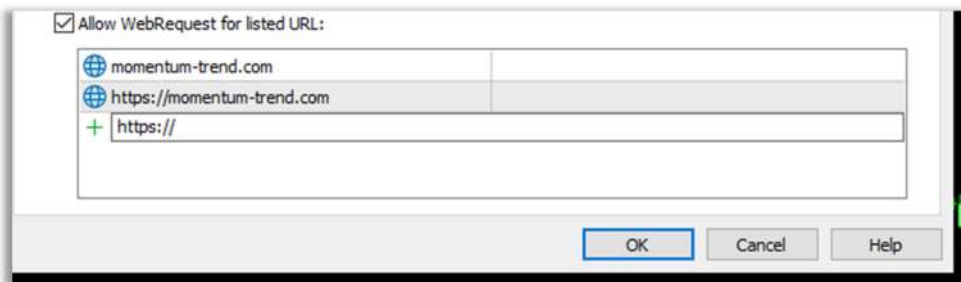


Allow EA Web Requests

MT5 Terminal > Tools> Options> Expert Advisors (Tab)

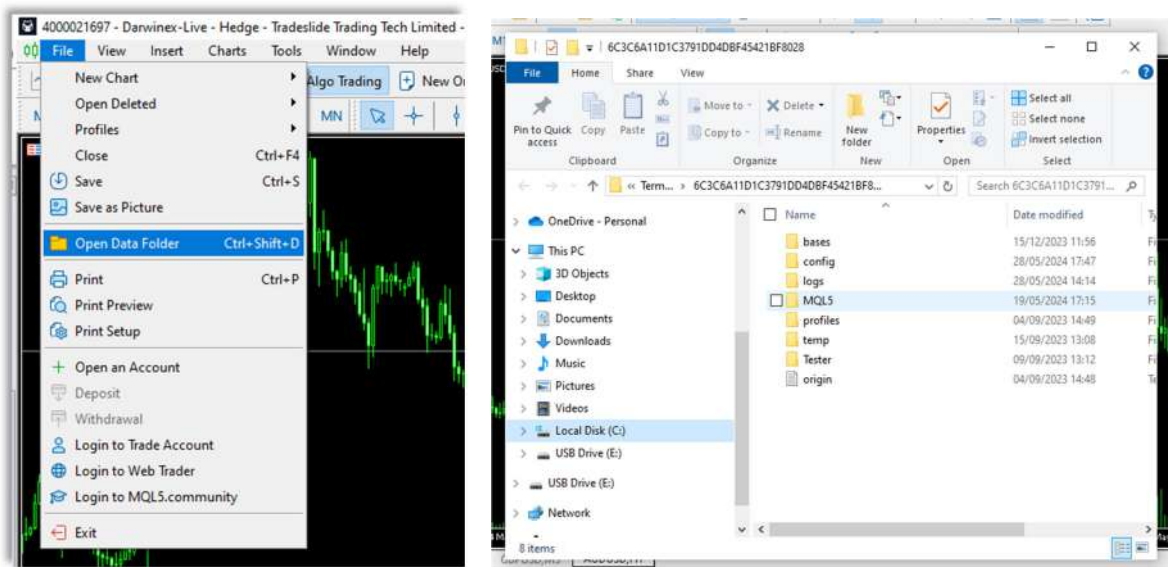


> type in **"https://momentum-trend.com"** , then Press OK.



Expert Advisor Directory

File > Open Data Folder > MQL5 > Experts> put your Expert Advisor (EA) in this folder.

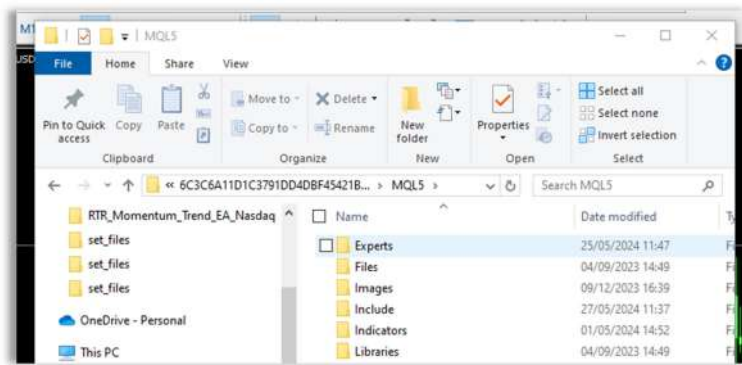


>Open Data Folder 'Ctrl+Shift+D'

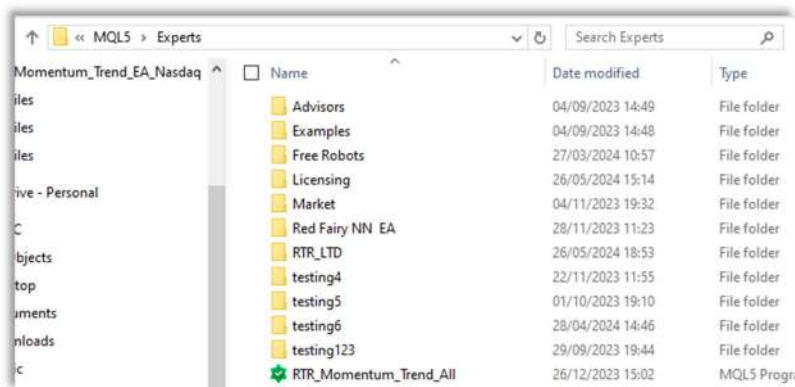


Manual - RTR Momentum Trend All Symbols - Expert Advisor Setup

>MQL5 Folder

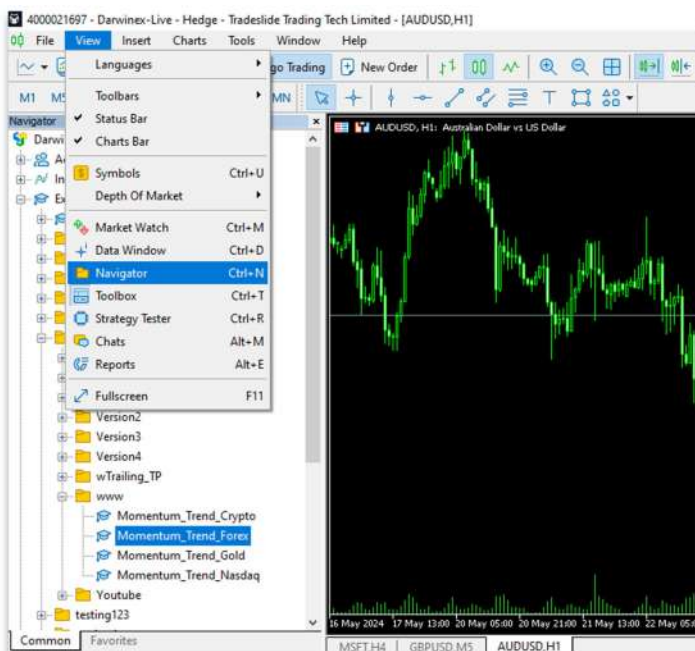


>Experts Folder



Load EA on Chart

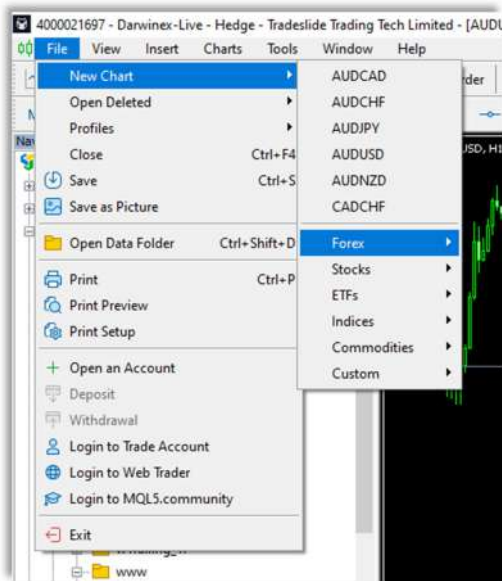
MT5 Terminal> View> Navigator> Expert Advisors



Now File> New Chart > “find your chart symbol e.g. USDJPY” > drag and drop EA from Navigator onto the chart>check Allow Algo Trading> ”type in your password” (required) > click load> Load SET file usdjpy_m15 > change chart time frame to M15.



Manual - RTR Momentum Trend All Symbols - Expert Advisor Setup



Note: Every time you load an EA onto a Chart you must give it a new Magic Number i.e. 56823798.

Magic Number is in the inputs tab; make sure it is at least 5 digits long.

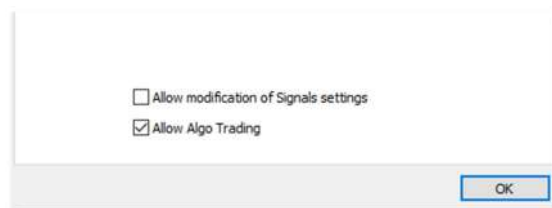
Every Instance of an Expert Advisor must have a new unique Magic Number.

So that there is no confusion between strategies that have the same symbol, but not necessarily the same settings.

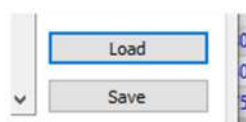
> drag and drop EA from the Navigator onto the chart .



> check "[] Allow Algo Trading" (Common Tab).



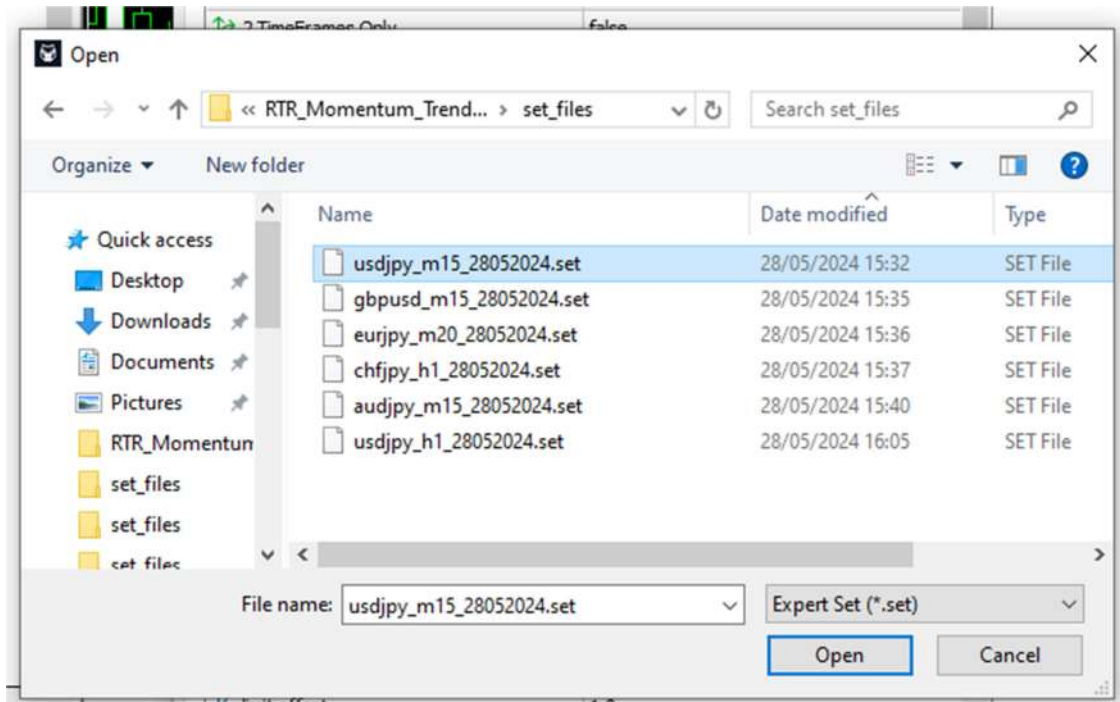
? click "Load" .



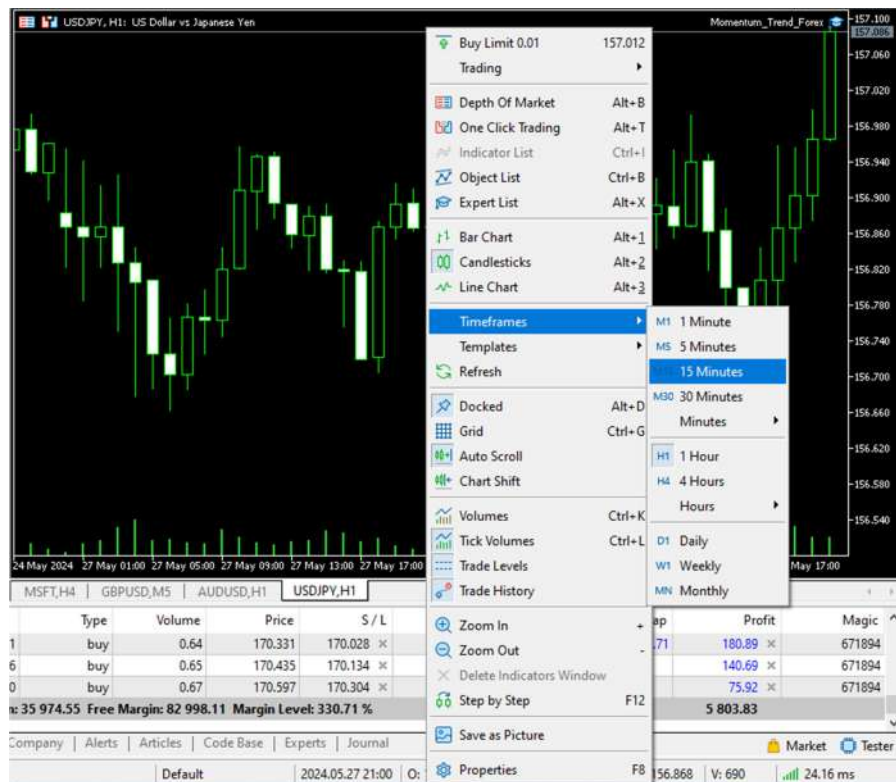
➤ Load the SET file for your symbol



Manual - RTR Momentum Trend All Symbols - Expert Advisor Setup



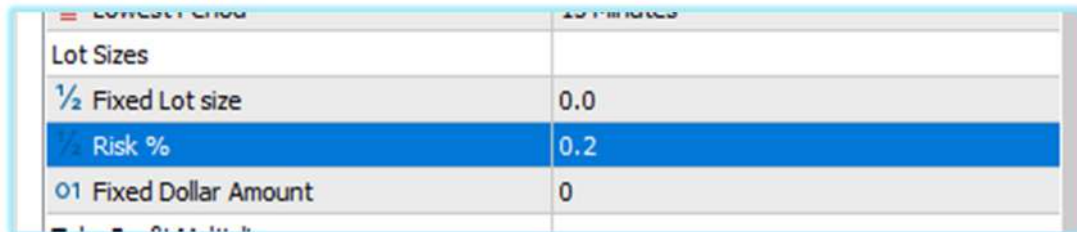
- Now change the Time Frame of the Chart to match the SET File name, i.e. usdjpy_m15, must be placed on M15 chart. Right click on the chart > Timeframes > M15
- If you have multi symbol EA - an Expert Advisor that trades multiple Symbols from 1 chart. Please drop the EA onto a Forex 5 Minute Chart (M5).
- If you are trading Conservative Settings set files place EA on H1 chart (1 hour), because lowest timeframe is H1 .





That is done, now you must change the risk in all **SET Files**. (Please Read the manual)

Change Risk Settings



Lot Sizes	
1/2 Fixed Lot size	0.0
1/2 Risk %	0.2
01 Fixed Dollar Amount	0

The '**Risk %**' input is the percentage % of account balance the EA will risk per trade.

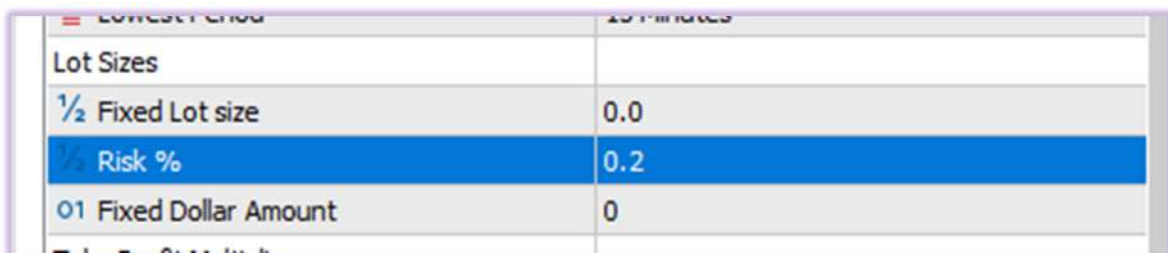
1.0 = 1.0% is the absolute **maximum** risk and should only be used if you are trading only 1 symbol i.e. **GOLD/USD**.

If you are trading **5** symbols (that is **5** charts with attached EAs) then the "Risk %" input on all Charts should be absolute maximum = $1\% \div 5$, which is equal to 0.20

You would type in "**0.20**", Risk % =**0.20**.

I am only using half of that, in my main Index Signal.

For Crypto I am using full Risk of = $1\% \div (\text{number of symbols})$, however I have a smaller initial deposit, that is 5 times smaller than my deposit for my main Darwinex account (non-crypto).



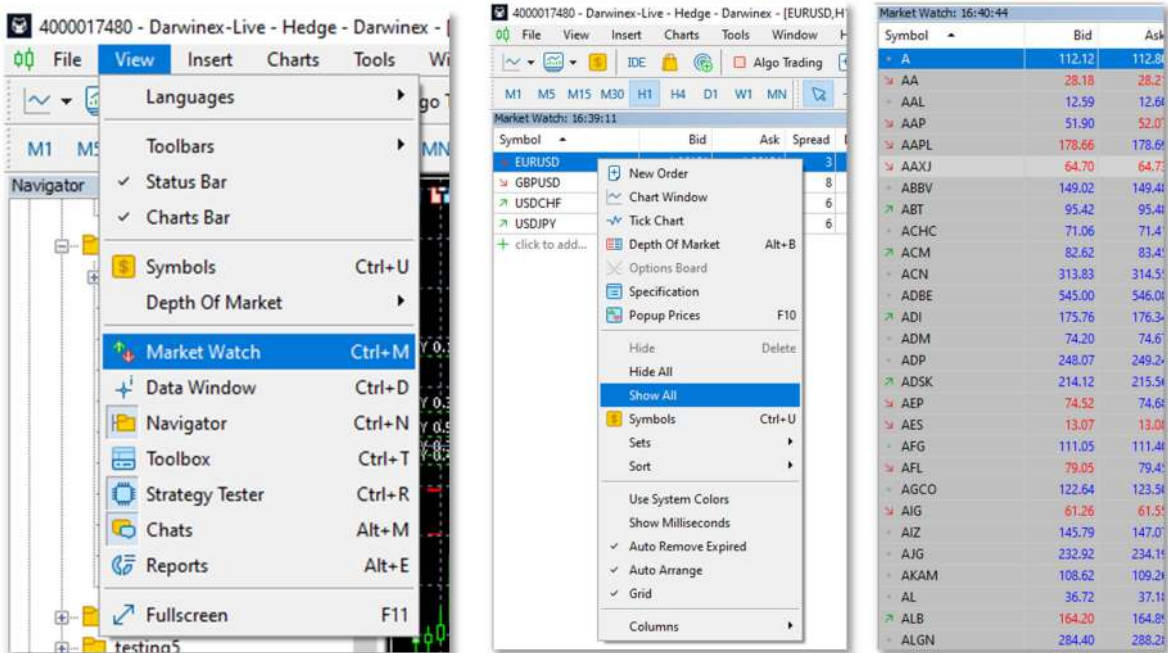
Lot Sizes	
1/2 Fixed Lot size	0.0
1/2 Risk %	0.2
01 Fixed Dollar Amount	0

Okay, now you can enjoy your trading.



Add Symbols to Market Watch Can't Find your Symbol, stock ticker, Chart?

If you cannot find your Ticker Symbol, MT5 Terminal > View > Market Watch...> right click any ticker inside Market Watch > Show All,



After you have all your desired symbols, return to Market Watch> right click any ticker > Hide All.

This way Market Watch is not running in the background using up CPU resources, looking at ticker quotes you are not interested in.

(Also While you are in Market Watch > Right Click any ticker> Columns > Spread. Shows all Bid-Ask spread in points.)



How to setup EA with a Windows Server VPS

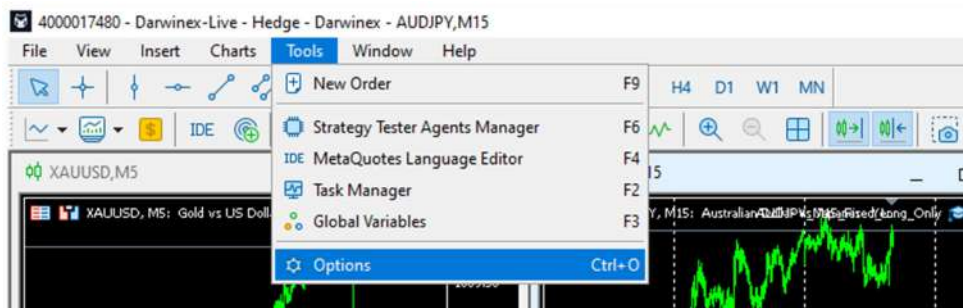
Windows Server 2012/2019/2022

Summary: Windows Server 2012 – is like Windows 7 PC, Windows Server 2019/2022 – is like Windows 10 PC.

ForexVPS.net Offer: <https://www.forexvps.net/partner/retailtradingrealities>

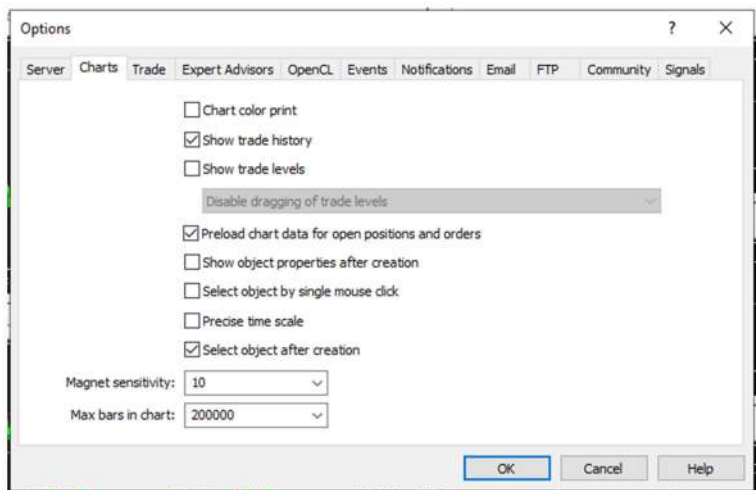
We also recommend <https://www.mql5.com/en/vps>, fastest ping.

Download and Install your MT5 like you would on a Windows 10/11 PC.



Copy my Settings:

MT5 Terminal > Tools> Options > Charts

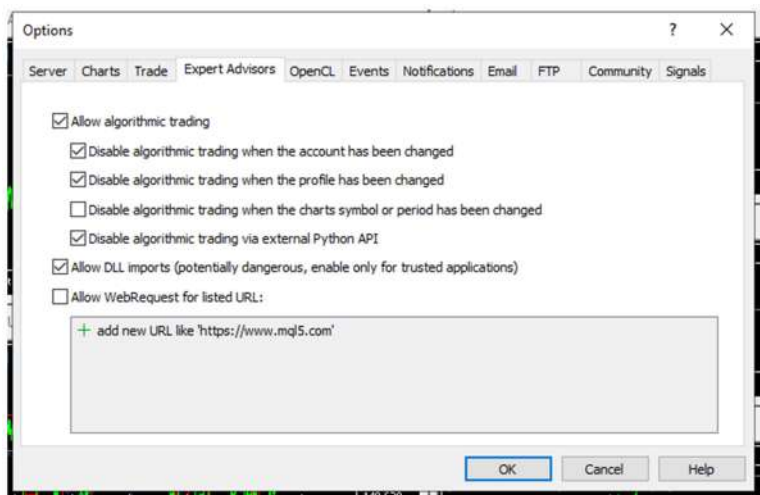


MT5 Terminal > Tools> Options > Expert Advisors

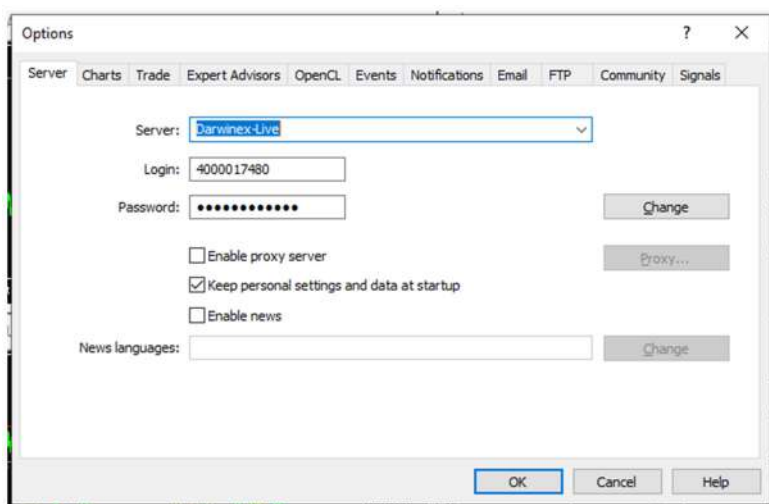




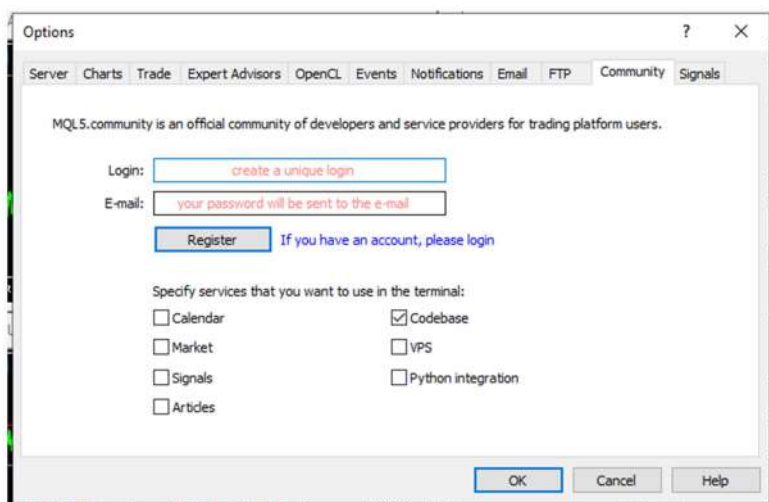
Manual - RTR Momentum Trend All Symbols - Expert Advisor Setup



MT5 Terminal > Tools> Options > Server



MT5 Terminal > Tools> Options > Community





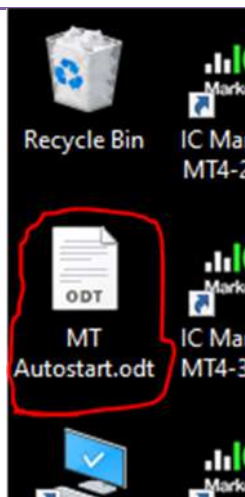
Final VPS step:

Once you have all Charts, Time Frames and Symbols you want use in view, go to View>Market Watch> right click any ticker, click > **'Hide All'**.

This will stop MT5 reading quotes in the background, from tickers/symbols the EA is not trading on.



MT4/5 AUTO START for VPS:



We at Retail Trading Realities are using ForexVPS.net, and they have this feature, where you can use their .exe program to Auto-Start all of your MT4/5 Terminals every time the server restarts. Remember You will have to restart your Server every now and then, but also your VPS provider will restart servers for maintenance.

You will have to enable this manually by reading the steps in the .ODT text file (usually on the Desktop).

Other Forex VPS providers also have this feature (nearly all of them).

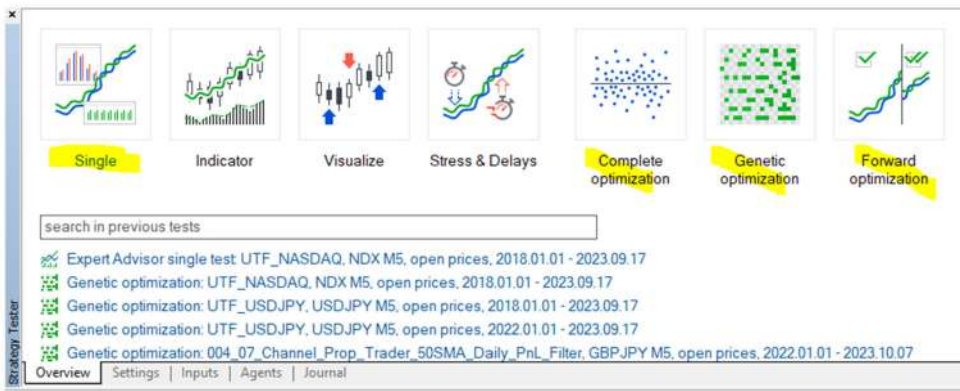
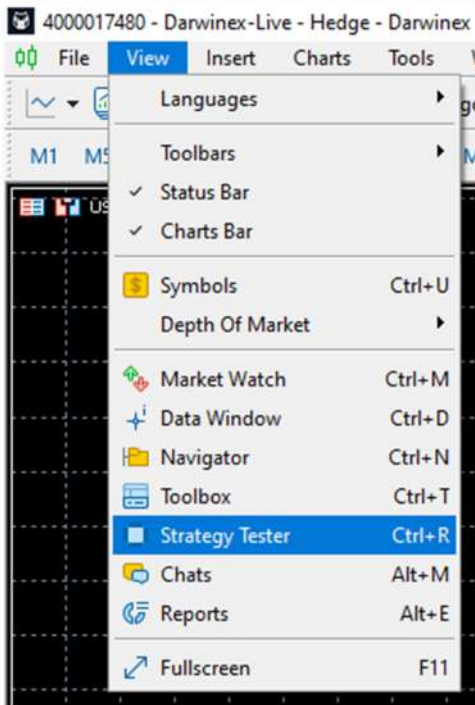
You won't need to do this if you have a server provided by MetaQuotes from MQL5.com .

Do not use a Linux server with MT4/5.



Strategy Tester & Optimizer in MT5 – What is it?

MT5 Terminal > View > Strategy Tester



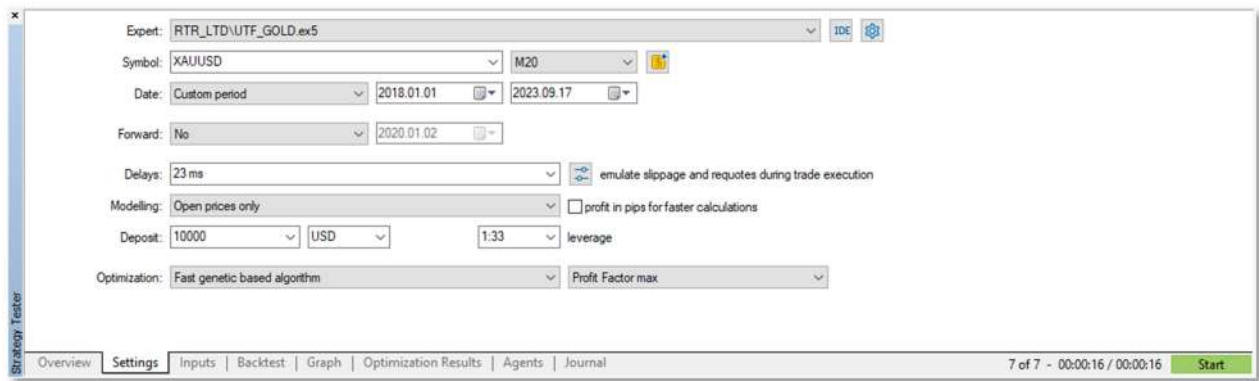
To back test an Expert Advisor, you can run a Single tests, and Optimizations in MT5 Strategy Tester.

Optimizations will look at the input parameters (see Inputs Tab of Expert) you have selected and all the values you wanted the EA to be tested for. It will test all possible combinations of settings. Be careful it is recommended you choose only up to 3 inputs for optimization. The more inputs selected the more chance of 'curve fitting'.

If you choose too many inputs and step settings, i.e. 2,000 combinations, MT5 will revert to a 'genetic algorithm', to find best settings, it won't test every combination. It will test a sample and try to find the best settings using their in-house secret algo.



Manual - RTR Momentum Trend All Symbols - Expert Advisor Setup

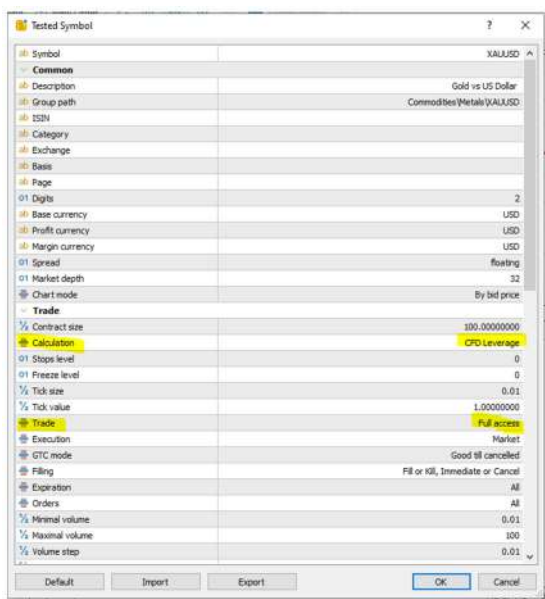


Choose Symbol and the Chart Period you would have placed the Expert Advisor on, if it were live trading.



The Yellow Dollar sign Icon is very important, to new users of MT5 strategy tester.

You will need to click on this Icon, to change the selected Symbols' defaults for a correct back test. Its' default is either; (No Leverage) 'CFD' and 'Forex No Leverage'. Here you will change it **to 'CFD Leverage' or 'Forex'.**



You can also change the default Direction from 'Full Access' to 'Long only' or Short Only', this change in direction set here, will only work for back tests and optimizations, this will not change in Live or Demo trading.

Modelling Data: using Open Prices (the RTR Momentum Trend Expert is coded On Open Prices – OnBar()), or simulated ticks called 'Every Tick', 'Every tick based on Real Ticks' include Broker historical Bid-Ask Spread, there is also a 1 minute bar option for the data.

Note: Back tests that have Real Tick selected will take a lot longer than on 'Open prices' modelling.



Manual - RTR Momentum Trend All Symbols - Expert Advisor Setup

I suggest Optimizations using 'Open Prices', then Run Single Back test using 'Real Ticks'.

Start	Step	Stop	Steps
55555	1	55550	

START, STEP, STOP:

START, is the first value of the input that will be tested.

STEP, is the increment, it will add to the previous value of the input that was tested, and will run a new test.

STOP, is the Last value of the input that will be tested for.

So in this Example we have selected only 1 input for Optimization, Profit Threshold.

We Start at 8, STEP (increment)= 2, FINISH at 20.

We will test Profit Threshold at; 8, 10, 12, 14, 16, 18, 20.

And there are 7 Passes (8 to 20).

Variable	Value	Start	Step	Stop	Steps
ExpertID Magic Number	671894	55555	1	55550	
Time Frames, if 2 TF only, Middle Period will be ignored					
<input type="checkbox"/> 2 TimeFrames Only	false	false		true	
<input type="checkbox"/> Highest Period	1 Day	current		1 Month	
<input type="checkbox"/> Middle Period - ignored when 2 TimeFrames = true	1 Hour	1 Hour		4 Hours	
<input type="checkbox"/> Lowest Period - must attach EA to this chart	20 Minutes	15 Minutes		1 Hour	
Stop Lot Sizes					
<input type="checkbox"/> Fixed Lot size e.g 1.32 lots, ignored if 'Risk %' is used	0.1	0.1	0.01	1.0	
<input type="checkbox"/> 'Risk %' per Trade 1.00 = 1% Risk, 0.50 is half%	1.0	0.01	0.001	0.1	
Fixed \$Dollar Amount. Leave as 0 if not intended to use					
<input type="checkbox"/> Fixed \$Dollar Amount per Trade.	0	0	1	10	
Take Profit Multiplier					
<input checked="" type="checkbox"/> Profit Threshold	10.0	8	2	20	7
Direction - Both, Long only, Short only					
<input type="checkbox"/> Direction	Both	Both		Short_Only	
Custom Trade Comment					
<input type="checkbox"/> custom comment					
Spread Filter					
<input type="checkbox"/> Maximum Spread	60	30.0	3.0	300.0	
Day of Week Filter					
<input type="checkbox"/> Sunday	true	false		true	
<input type="checkbox"/> Monday	true	false		true	
<input type="checkbox"/> Tuesday	true	false		true	
<input type="checkbox"/> Wednesday	true	false		true	
<input type="checkbox"/> Thursday	true	false		true	
<input type="checkbox"/> Friday	true	false		true	
<input type="checkbox"/> Saturday	true	false		true	
Hour of Day Filter					
<input type="checkbox"/> Start operation hour	00:00	00:00		23:00	
<input type="checkbox"/> Last operation hour	23:00	00:00		23:00	

Overview | Settings | Inputs | Optimization Results | Agents | Journal

112 of 112 - 00:05:26 / 00:05:26 Start

Select expert...		View previous optimization results							Select criterion	
Pass	Result	Profit	Total trades	Profit factor	Expected payoff	Drawdown %	Recovery factor	Sharpe ratio	Profit_Threshold	
0	1.81	51104.62	318	1.81	160.71	34.14	3.53	1.68	8	
1	1.85	70448.05	339	1.85	207.81	30.16	3.05	1.54	10	
2	2.23	203867.70	347	2.23	587.51	26.42	3.48	2.07	12	
3	1.59	52245.76	401	1.59	130.29	47.01	0.95	0.91	14	
4	1.59	70564.82	417	1.59	169.22	47.07	0.98	0.96	16	
5	1.74	135499.55	439	1.74	308.66	47.09	1.05	1.08	18	
6	1.44	93071.71	454	1.44	205.00	47.47	1.00	0.82	20	

Strategy Tester

Overview

Settings

Inputs

Optimization Results

Agents

Journal

7 of 7 - 00:00:11 / 00:00:11

Start

Source: https://www.metatrader5.com/en/terminal/help/algotrading/strategy_optimization



EA Inputs: Description & Explanation

Inputs	Default	Description
Magic Number	123456	Expert Advisor unique ID, each time you load it on a chart give it a new 6-7 digit number
Enter Symbols	USDJPY XAUUSD NDX COST META TSLA MSFT	To enter multiple symbols, separate by typing a ' ' after your symbol, you don't need to put it after the last symbol. Enter "CURRENT" if you want the symbol the EA is currently on. Or Type a single symbol.
TimeFrames		
Two TF Mode	true false false false false false false	'true' for Two timeframe mode or 'false' Three timeframe mode. On Two timeframe mode middle timeframe is ignored.
Highest TF	D1 D1 D1 H4 H4 D1 H4	Highest chart that references the trend
Middle TF	H4 H2 H4 M20 H1 H3 H1	Middle timeframe, is for the pullback (not in Two timeframe mode)
Lowest TF	M15 M15 M15 M5 M5 M5 M5	Lowest time frame this is the execution timeframe where SL and TP is calculated.
Take Profit Multiplier		



Manual - RTR Momentum Trend All Symbols - Expert Advisor Setup

Profit Threshold	18 16 10 14 18 14 14	Profit level is a multiplier of Stop Loss, there is also a higher timeframe trailing stop.
Direction		
Direction: Both/Long/Short	Long Both Both Long Long Long Long	
Spread Filter		
Max Spread	0 0 0 0 0 0 0	If you type in a number higher than 0 then no trades will be executed if the spread displayed in MarketWatch window is higher than the number set.
Entry deviation (multiplier of spread)	3 3 3 3 3 3 3	Maximum slippage allowed the number is multiplier of current spread.
Order Type		
MARKET/LIMIT order	MARKET MARKET MARKET MARKET MARKET MARKET MARKET	
Risk Management MODE		
Risk_Management	Normal	Normal - example if risk % is set to 1, each trade will be risking 1% of account balance. Prop Firm Mode, will try and never hit Prop Firm maximum Drawdown equity, which the user sets. Backtest Prop mode must only be used in back testing.
Prop Firm Max DrawDown	9000	Does not apply to Normal Mode, Prop Firm Live and Back test mode this applies to.
Lot Sizes		
Fixed Lot Size	0	i.e. 1.40 lots, for every trade, set all others to 0, if using this mode.
Risk %	1	i.e. Risk 1% of account balance per trade, set all others to 0, if using this mode.
Fixed Dollar Amount	0	i.e. 110 = Risk \$110 dollars per trade, set all others to 0, if using this mode.
Custom Trade Comment		
custom comment		i.e. "Sarah's Safe mode trades"
Limit order Settings		
limit offset	1.0	Only works if LIMIT is selected, offset is a multiplier of the spread, so a buy limit will be executed at current price minus the spread.
expiry_hours	120	Only works if LIMIT is selected, how many hours you want limit orders to exist.
Day of Week Filter	true	enter true or false. 'false' if you don't want EA to open trades on a given day
Hour of Day Filter		
Start Hour	0000	Self-explanatory
Last Hour	2300	Self-explanatory



Single symbol settings for RTR Momentum Trend All Symbols Unlimited

	USDJPY	AUDJPY	EURJPY	CHFJPY
Magic Number	123456	123456	123456	123456
Enter Symbols	USDJPY	AUDJPY	EURJPY	CHFJPY
TimeFrames				
Two TF Mode	true	FALSE	false	true
Highest TF	D1	D1	D1	W1
Middle TF	H4	H4	H1	H4
Lowest TF	M15	M15	M20	H1
Take Profit Multiplier				
Profit Threshold	16	14	18	16
Direction				
Direction: Both/Long/Short	Long	Long	Long	Long
Spread Filter				
Max Spread	0	0	0	0
Entry deviation (multiplier of spread)	3	3	3	3
Order Type				
MARKET/LIMIT order	MARKET	MARKET	MARKET	MARKET
...All other settings you can leave as default or change as you wish				
	USDJPY	USDJPY	XAUUSD	NDX
Magic Number	123456	123456	123456	123456
Enter Symbols	USDJPY	USDJPY	XAUUSD	NDX
TimeFrames				
Two TF Mode	true	true	false	false
Highest TF	W1	D1	D1	D1
Middle TF	H4	H4	H2	H4
Lowest TF	M30	H1	M15	M15
Take Profit Multiplier				
Profit Threshold	17	12	16	10
Direction				
Direction: Both/Long/Short	Long	Long	Both	Both
Spread Filter				
Max Spread	0	0	0	0
Entry deviation (multiplier of spread)	3	3	3	3
Order Type				
MARKET/LIMIT order	MARKET	MARKET	MARKET	MARKET
...All other settings you can leave as default or change as you wish				



Manual - RTR Momentum Trend All Symbols - Expert Advisor Setup

	ADBE	COST	META	MSFT
Magic Number	123456	123456	123456	123456
Enter Symbols	ADBE	COST	META	MSFT
TimeFrames				
Two TF Mode	false	false	false	false
Highest TF	D1	H4	H4	H4
Middle TF	M20	M20	H1	H1
Lowest TF	M5	M5	M5	M5
Take Profit Multiplier				
Profit Threshold	16	18	18	14
Direction				
Direction: Both/Long/Short	Long	Long	Long	Long
Spread Filter				
Max Spread	0	0	0	0
Entry deviation (multiplier of spread)	3	3	3	3
Order Type				
MARKET/LIMIT order	MARKET	MARKET	MARKET	MARKET
...All other settings you can leave as default or change as you wish				
	TSLA	NVDA	ETH	ETH
Magic Number	123456	123456	123456	123456
Enter Symbols	TSLA	NVDA	ETH	ETH
TimeFrames				
Two TF Mode	false	false	false	FALSE
Highest TF	D1	D1	D1	D1
Middle TF	H3	H4	H4	H4
Lowest TF	M5	M5	M20	M15
Take Profit Multiplier				
Profit Threshold	14	18	14	16
Direction				
Direction: Both/Long/Short	Long	Long	Both	Long
Spread Filter				
Max Spread	0	0	0	0
Entry deviation (multiplier of spread)	3	3	3	3
Order Type				
MARKET/LIMIT order	MARKET	MARKET	MARKET	MARKET
...All other settings you can leave as default or change as you wish				
	BTCUSD	SOLUSD	LTCUSD	LNKUSD
Magic Number	123456	123456	123456	123456



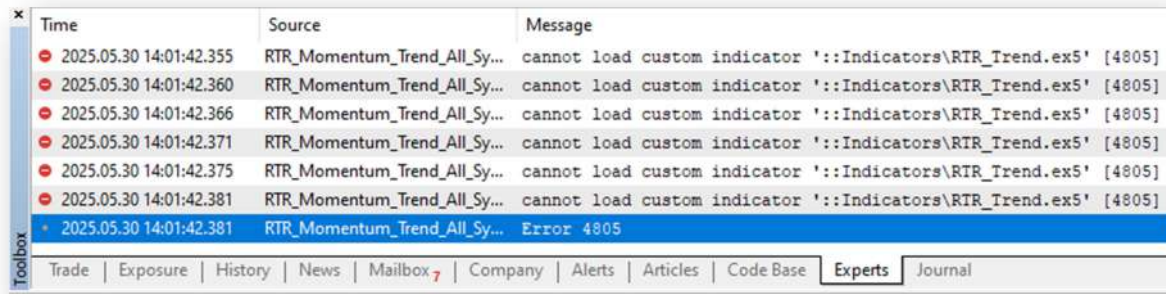
Manual - RTR Momentum Trend All Symbols - Expert Advisor Setup

Enter Symbols	BTCUSD	SOLUSD	LTCUSD	LNKUSD
TimeFrames				
Two TF Mode	false	true	false	false
Highest TF	D1	D1	D1	D2
Middle TF	H1	H3	H1	H3
Lowest TF	M15	M30	M20	M15
Take Profit Multiplier				
Profit Threshold	14	18	16	10
Direction				
Direction: Both/Long/Short	Long	Long	Long	Long
Spread Filter				
Max Spread	0	0	0	0
Entry deviation (multiplier of spread)	3	3	3	3
Order Type				
MARKET/LIMIT order	MARKET	MARKET	MARKET	MARKET
...All other settings you can leave as default or change as you wish				
	DOTUSD			
Magic Number	123456			
Enter Symbols	DOTUSD			
TimeFrames				
Two TF Mode	true			
Highest TF	D1			
Middle TF	H4			
Lowest TF	M15			
Take Profit Multiplier				
Profit Threshold	12			
Direction				
Direction: Both/Long/Short	Long			
Spread Filter				
Max Spread	0			
Entry deviation (multiplier of spread)	3			
Order Type				
MARKET/LIMIT order	MARKET			
...All other settings you can leave as default or change as you wish				



ERROR 4805 – Fix – Solution!

ERROR 4805 – cannot load custom indicator ‘::Indicators\RTR_Trend.ex5’ [4805]



Time	Source	Message
2025.05.30 14:01:42.355	RTR_Momentum_Trend_All_Sy...	cannot load custom indicator '::Indicators\RTR_Trend.ex5' [4805]
2025.05.30 14:01:42.360	RTR_Momentum_Trend_All_Sy...	cannot load custom indicator '::Indicators\RTR_Trend.ex5' [4805]
2025.05.30 14:01:42.366	RTR_Momentum_Trend_All_Sy...	cannot load custom indicator '::Indicators\RTR_Trend.ex5' [4805]
2025.05.30 14:01:42.371	RTR_Momentum_Trend_All_Sy...	cannot load custom indicator '::Indicators\RTR_Trend.ex5' [4805]
2025.05.30 14:01:42.375	RTR_Momentum_Trend_All_Sy...	cannot load custom indicator '::Indicators\RTR_Trend.ex5' [4805]
2025.05.30 14:01:42.381	RTR_Momentum_Trend_All_Sy...	cannot load custom indicator '::Indicators\RTR_Trend.ex5' [4805]
2025.05.30 14:01:42.381	RTR_Momentum_Trend_All_Sy...	Error 4805

This is not a coding error. This is an error to do with your CPU and MT5 cache (temporary memory).

This is only a problem with the multi-symbol EAs; old CPUs, old chipsets, Computers with less than 8GB Ram.

This problem is easily solved, once solved you won't have a problem as cache will remember correctly.

This can happen in 1) the Strategy Tester or 2) when loading on a chart for Live trading. Both have different Solutions.

(1) MT5 Strategy Tester Solution

- Close down all programs running on your Operating System (or restart your PC).
- Restart your MT5 terminal. Make sure your data goes far enough back for the symbols and custom dates you have chosen. View > Symbols > Bars, to see you historic data.

(2) MT5 Live Trading Solution (EA on a Live chart)

- Restart your PC/Laptop. Open MT5 Terminal, no other programs. MT5 will open with the last settings you closed with and we want a new cache (temp memory).

File > Profiles > Save As...> name your new profile > close all charts > open a new chart i.e. EURUSD, just 1.

Drag & Drop EA onto the chart M5 (or H1 for conservative set files),

There should only be 1 chart open> Load SET Files> OK

Now do this for other charts you want to add and remember to add unique Magic Number to the new EA.

Now you have loaded all your EAs with No 4805 Errors. Restart your MT5 terminal and you will see it will **ALWAYS** load your EAs with no problems, that is because the profiles cache (temp memory) is set correctly!



Retail Trading Realities Ltd
Company number 15221732

71-75 Shelton Street,
Covent Garden,
London, WC2H 9JQ,
United Kingdom

W: <https://momentum-trend.com>
E: contact@retailtradingrealities.com